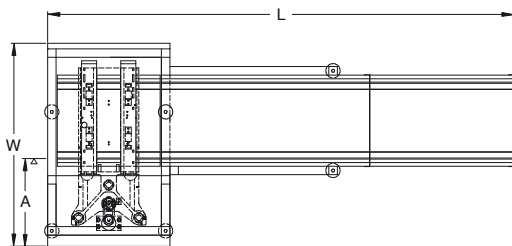


Multi magazine line unloader



NTM 110UM • NTM 110UL • NTM 110UXL

The unit provides automatic magazine change-over for continuous line unloading. PCB's are collected from an upstream pusher conveyor (ordered separately) and pushed into the magazine. Full magazines are offloaded at an ergonomic low level.



Standard features

- Automatic magazine change-over.
- Automatic magazine alignment by upper and lower pneumatic clamping.
- Controlled by PLC.
- Tailor made to the magazine of your choice.
- Threshold signal to protect PCB's in upstream oven.
- Towerlight display for machine status.
- Selectable pitch settings.
- CE certified.

Technical specifications

Transfer height:	950 mm ± 25 mm*
Colour:	RAL 9002*
Flow direction:	Left to right*
Fixed rail:	Front*
Machine interface:	SMEMA*
Components clearance:	Top 30 mm, bottom 30 mm (depends on pitch)
Power supply:	230 VAC/50 Hz/1 Ph
Power consumption:	550 VA max.
Air supply:	4-6 bar
Air consumption:	10 ltr/min max.
PCB unloading time:	± 6 seconds
Magazine change-over time:	± 30 seconds
Pitch control:	1-4, 10mm pitch
Maximum total magazine weight:	50 kg each
Total number of magazines:	1 magazine on the lifter platform. 2 empty magazines on the upper magazine conveyor. 3 full magazines on the lower magazine conveyor.
Pusher conveyor:	To be ordered separately * or specify

Options

- Width adjustable magazine conveyor(s)
- Additional magazine capacity
- Shorter magazine change-over time (±22 sec)
- Touchscreen display
- Alarm buzzer

Other options available on request

	NTM 110UM	NTM 110UL	NTM 110UXL
Machine dimensions (l x w x h)	1870 x 820 x 1700 mm	2535 x 1045 x 1700 mm	2535 x 1095 x 1700 mm
Weight	235 kg	330 kg	400 kg
PCB length	80 mm - 330 mm	80 mm - 457 mm	80 mm - 460 mm*
PCB width	70 mm - 250 mm	70 mm - 407 mm	70 mm - 460 mm*
Magazine dimensions (max.)	360 x 320 x 583 mm	535 x 530 x 570 mm	535 x 580 x 570 mm
Fixed rail to front dimension (A)	380 mm	395 mm	395 mm

* or specify