

■Wide variety of related products

■Heads

H24G

- A high-speed placement head that has both accuracy and speed.

DynaHead

- A multi-head with the flexibility to place a great range of parts. With automatic tool exchange, and the ability to place a wide variety of parts - from regular chip parts to large, odd-form parts - it is possible to handle any type of production. The DynaHead has both the flexibility and productivity required for high-mix production.

OF

- A head supporting large parts up to height of 38.1 mm.

■Reel part supply

MFU-65II

- Feeder batch changeover cart capable of loading up to 65 8 mm tape feeders at once.

HexaFeeder

- Supplies six 8 mm tapes while only taking up four feeder slots, making it possible to load even more devices to the machine.

Auto Loading Feeder (under development)

- Inserts the second tape into the feeder. Recognizes the new tape automatically and loads it smoothly for continuous production.

■Stick part supply

Stacked stick feeder

- Reduces resupply frequency for often used parts in sticks.

Single vibratory stick feeder

- Supports large scale relays and special connection parts which cannot keep their position without assistance. - A parts out warning function is included, and parts are supplied during production.

■Tray part supply

Tray unit-LTW2

- Allows up to 48 tray parts and 25 8 mm tape feeders to be loaded at the same time. - Supports large parts up to 1.5 inches in height. - Twin magazines provide non-stop supply.

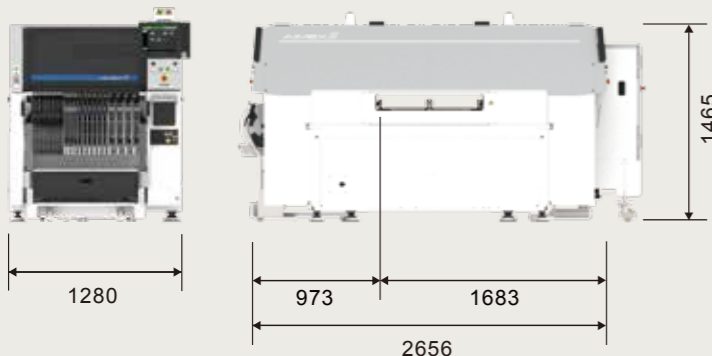
Tray unit-M

- Load up to 10 types of tray parts. - Used together with an MFU unit.

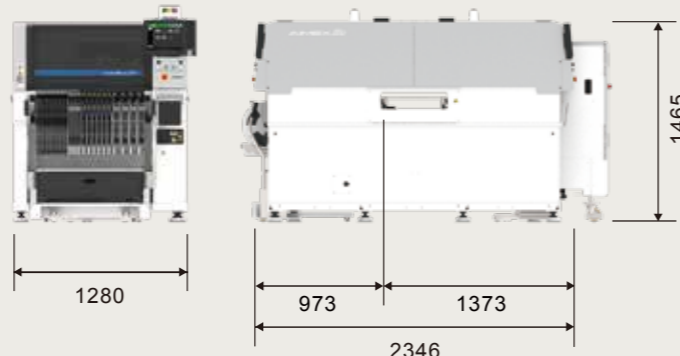


■Dimensions (mm)

■AIMEX III



■AIMEX IIIc



Flexible high-mix production

Specifications

Quantity of robots (heads)		1	2
Throughput (cph)	DX	27,000 (12nozzles) / 12,000 (4nozzles) / 5,800 (1nozzle)	54,000 (12nozzles) / 24,000 (4nozzles) / 11,600 (1nozzle)
	H24G	Normal mode	35,000 (H24G x 1)
		Productivity priority mode	37,000 (H24G x 1)
H08M	13,000 (H08M x 1)	26,000 (H08M x 2)	
Heads		DX, H24G, H08M, H02F, H01, OF	
Placing accuracy	H24G	±0.025mm Cpk≥1.00	
	H08M	±0.040mm Cpk≥1.00	
	H02F	±0.025mm Cpk≥1.00	
Feeder slot quantity		130	
Supply units		Tape feeders, Stick feeders, Tray units (Tray unit-M / Tray unit-LTW2) etc	
Machine		AIMEX III	AIMEX IIIc
Dimensions		1280(L) x 2656(W) x 1465(H)mm	1280(L) x 2346(W) x 1465(H)mm
Panel size	Single conveyor	48(L) x 48(W)mm ~ 774(L) x 710(W)mm	48(L) x 48(W)mm ~ 508(L) x 400(W)mm
	Double conveyor	48(L) x 48(W)mm ~ 774(L) x 330(W)mm (dual transport)	-
		48(L) x 48(W)mm ~ 774(L) x 610(W)mm (single transport)	-

* Under development

FUJI MACHINE MFG. CO., LTD.

Tel: +81-566-81-2110

Fax: +81-566-83-1140

*The contents of this catalog are subject to change without notice.

*The information in this catalog is current as of February, 2016.

AIMEX III series



Supports production for large panels and simultaneous production of two models

AIMEX III



Compact design with a reduced length

AIMEX III C

■ Supporting 0402 (01005") to 74 x 74 mm by one head



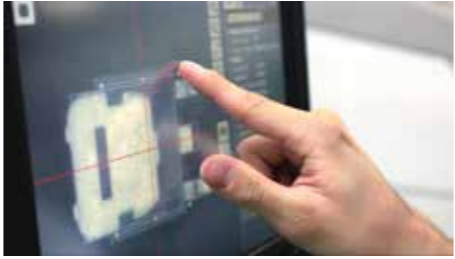
A DX head exchanges the dedicated tool in one action depending on the part size, from small chips to large odd-form parts. Also, using wide range nozzles together provides further efficient placement.

■ Minimizing the changeover count



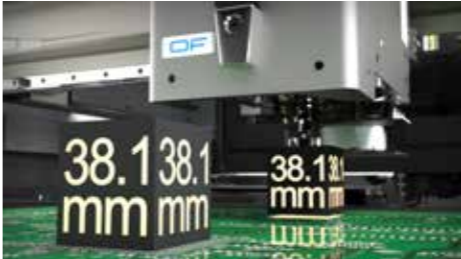
Changeover time can be reduced by performing MFU batch changeover and by the machine having up to 130 slots for feeders which makes it possible to load all of the required parts.

■ Ramping up production smoothly



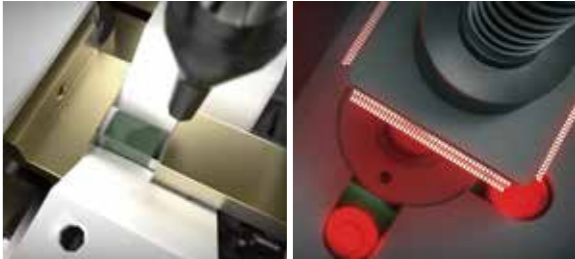
Automatic data creation and on-machine editing using a large touchscreen panel work to support ramping up new production and quick response to sudden changes to programs.

■ Placement and pressure insertion for larger parts



Supports parts with a height of up to 1.5 inches (38.1 mm) and pressure insertion of up to 98 N by using the OF head and tray unit-LTW2.

■ Eliminating placing defects through multiple checks



High quality placement is achieved with one machine by preventing defects before they can occur through the use of LCR checks, coplanarity checks for leads and bumps, and upside-down checks for minimolds.