

Multi magazine line loader



NTM I1OLM • NTM I1OLL • NTM I1OLXL

The unit loads your production line automatically by pushing PCB's out of the magazine onto the conveyor of the downstream machines. Full magazines are inserted at an ergonomic low level.

Standard features

- Automatic magazine change-over.
- Magazine alignment by upper and lower pneumatic clamping.
- Controlled by PLC.
- Tailor made to the magazine of your choice.
- Regulated pressure on pneumatic pusher.
- Towerlight display for machine status.
- Selectable pitch settings.
- CE certified.

Technical specifications

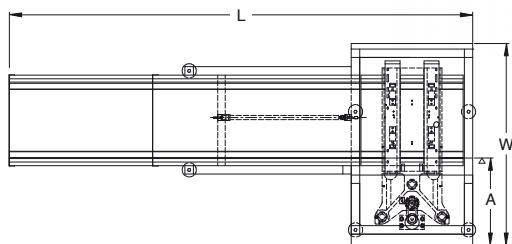
Transfer height:	950 mm ± 25 mm*
Colour:	RAL 9002*
Flow direction:	Left to right*
Fixed rail:	Front*
Machine interface:	SMEMA*
Components clearance:	Top 30 mm, bottom 30 mm (depends on pitch)
Power supply:	230 VAC/50 Hz/1 Ph
Power consumption:	550 VA max.
Air supply:	4-6 bar
Air consumption:	10 ltr/min max.
PCB loading time:	± 6 seconds
Magazine change-over time:	± 30 seconds
Pitch control:	1-4, 10 mm pitch
Maximum total magazine weight:	50 kg each
Total number of magazines:	1 magazine on the lifter platform. 2 empty magazines on the upper magazine conveyor. 3 full magazines on the lower magazine conveyor.

* or specify

Options

- Width adjustable magazine conveyor(s)
- Additional magazine capacity
- Shorter magazine change-over time (±22 sec)
- Automatic pusher positioning system
- Touchscreen display
- Alarm buzzer

Other options available on request



	NTM 11OLM	NTM 11OLL	NTM 11OLXL
Machine dimensions (l x w x h)	1870 x 820 x 1700 mm	2535 x 1045 x 1700 mm	2535 x 1095 x 1700 mm
Weight	235 kg	330 kg	400 kg
PCB length	80 mm - 330 mm	80 mm - 457 mm	80 mm - 460 mm*
PCB width	50 mm - 250 mm	50 mm - 407 mm	50 mm - 460 mm*
Magazine dimensions (max.)	360 x 320 x 583 mm	535 x 530 x 570 mm	535 x 580 x 570 mm
Fixed rail to front dimension (A)	380 mm	395 mm	395 mm

* or specify