

The MSD Series

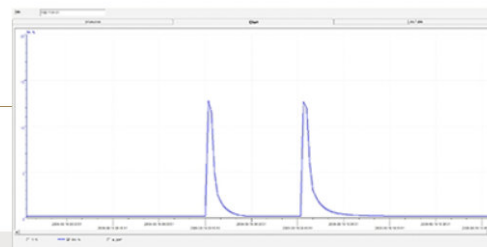
Technical Data for MSD Modular Desiccant Dry Cabinets

Features



	MSD 1222-54 Basic cabinet	MSD 1223-00 Add-on cabinet	Capacity MSD 1222-54
Ext. dimensions (WHD)	840 x 2040 x 900 mm	840 x 2040 x 900 mm	Reels: 352
Int. dimensions (WHD)	830 x 1780 x 850/730 mm	830 x 1780 x 850 mm	Diameter: 330 mm
Effective capacity	1200 L	1255 L	Thickness: 8mm
Weight	140 kg	125 kg	-
Power consumption	30 W/h	30 W/h	-
Number of shelves	4	4	-

Performance test



Instrument	Vaisala
Type Of Dew Point Sensor	Rotronic Sensor
Accuracy Of Dew Point Sensor	+/-1 % RH, +/- 0.3° C
Location Of Sensor	In The Direct Surrounding Of Cabinet Sensor
Ambient Conditions	Humidity 50 ± 5% RH, 25° ± 2°C, Pressure 994 ± 20 HPa
Door Openings	2 Door Openings Of 15 Sec. (Average RH 0.70%)

Display



Settings:

- Menu Language Options
- Nominal Humidity Value
- Nominal Humidity Value Alarm
- Delay Humidity Alarm (In Combination With Heater)
- Nominal Temperature Value (In Combination With Heater)
- Temperature Alarm (In Combination With Heater)
- Delay Temperature Alarm
- Door Alarm
- Interlocking
- Manual Regeneration

Display:

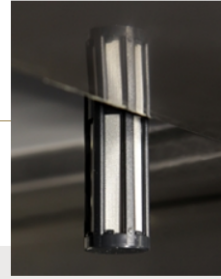
- Voltage Supply (Supplied By Drying Unit) 24 VAC/DC
- 4 Input Function Keys (Tactile-Touch Keys)
- Display 61 X 33 Mm, White, Controllable Backlight, Adjustable Contrast
- Ethernet Connection
- Power Consumption 24 VDC, 40 MA

Drying - U 5000 series



- Dehumidifying Performance 120 G/H Max
- Minimal Humidity 0,2% RH
- Dehumidifying Temperature 10 – 60° C
- Electric Supply 120 VAC / 230 VAC
- Dimensions (LWH) 487 X 487 X 150 Mm
- Weight: 21 Kg

Rotronic sensor HC2-S



Based on the Airchip 3000 Technology, the HygroClip 2 probes can be used for control of temperature and humidity. The HygroClip 2 probes can be configured with the ROTRONIC HW4 software and share the following features:

- ✓ Measurement of relative humidity and temperature
- ✓ Data recording of up to 2000 relative humidity and temperature value pairs
- ✓ Programmable automatic sensor test with fail safe mode and sensor drift compensation

Heater SH-1200



Voltage	230 V AC (110 V AC Optional)
Frequency AC	50/60 Hz
Power	1650 W
Thermal Protection	70 °C
Temperature Range	0 -40°C
Air Flow	550 M ³ /H