



SCHEUGENPFLUG AG
METERING AND DISPENSING TECHNOLOGY

Material Preparation and Feeding 04 | 13

VACUUM BARREL FOLLOWER PLATE FOR A220/A280

PREVENTION OF UNNECESSARY MATERIAL CONSUMPTION

No contamination with encrusted material residues from previously used drums or barrels (disposable product)

Minimal material waste per barrel change

Nearly complete emptying of drums and barrels

BUBBLE-FREE DOCKING

Ultimate process reliability

RAPID BARREL CHANGE-OVER

Fully automated docking

No mechanical removal of product residues needed

No manual evacuation necessary during barrel change-over

VACUUM BARREL FOLLOWER PLATE FOR A220/A280

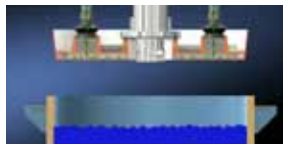


Intelligent Investment for Ongoing Production Cost-Effectiveness.

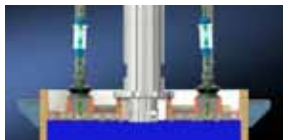
The patented vacuum barrel follower plate is used in the Scheugenpflug A220 and A280 systems. It was developed specifically for feeding highly viscous dispensing media directly from a hobcock or drum. Compared to conventional barrel follower plate systems the Scheugenpflug barrel follower plate prevents air from being absorbed during the docking procedure. At the same time, the material surface is smoothed, which further helps to stabilise the material flow. This way, flaws are prevented already at the beginning of the process chain.

The barrel follower plate is made of polyethylene (PE), which guarantees sliding and manufacturing characteristics that are convincingly supportive to the production process. In addition, PE shows superior surface compatibility with the most frequently used dispensing media.

The specially designed A220/A280 systems supply highly viscous media.



The vacuum barrel follower plate attaches itself perfectly to the material in the hobcock.



The air trapped between the plate and the surface of the dispensing material is removed through the plate by a vacuum pump. This way, air can no longer enter into the dispensing material and into the feeding process.

At the same time the material surface is levelled, which facilitates a constant flow of the dispensing mass. The dispensing material is pressed through the opening in the middle and into the supply lines. A controlled filling level measurement system ensures that the container is emptied completely.

| | Conventional BFP | Scheugenpflug pat. Vacuum Barrel Follower Plate (A220 / A280) |
|--|------------------|---|
| Material waste during evacuation | 0.50 kg (100%) | 0.05 kg (10%) |
| Residual material in barrel | 1.00 kg | 0.10 kg |
| Total material waste per barrel change | 1.50 kg | 0.15 kg |
| Costs for material waste per barrel change (at a reasonable price of € 25/kg) | 38.00 € | 4.00 € |
| Costs for disposable vac. follower plate | 0.00 € | 7.33 € |
| Total waste costs per barrel change | 38.00 € | 11.33 € |
| 1 barrel change per day, 221 days a year | 8,398.00 € | 2,503.93 € |
| Total potential savings with the vacuum barrel follower plate each year | | 5,894.07 € |

Price reductions based on order volume available!

GERMANY

Scheugenpflug AG
Gewerbepark 23
93333 Neustadt a. d. Donau

Phone +49 9445 9564 0
Fax +49 9445 9564 40

vertrieb.de@scheugenpflug.de
www.scheugenpflug.de

CHINA

Scheugenpflug Resin Metering
Technologies Co., Ltd.
1st Floor, BLK 3
No 35 Hong Feng Road
Suzhou 215021

Phone +86 512 676 187 76
Fax +86 512 628 828 18

info@scheugenpflug.com.cn
www.scheugenpflug-china.com

USA

Scheugenpflug Inc.
975 Cobb Place Boulevard,
Suite 218
Kennesaw, Georgia 30144

Phone +1 770 218 0835
Fax +1 770 218 0931

sales.usa@scheugenpflug-usa.com
www.scheugenpflug-usa.com

SALES PARTNERS

BENELUX

Exmore Benelux bvba
Ketelaarstraat 8
2340 Beerse

Phone +32 14 618 666
Fax +32 14 618 675

info@exmore.com
www.exmore.com

ITALY

ATRA S.r.l
Via Roveredo 1/A
Z.I. Paradiso
33170 Pordenone

Phone +39 434 550 882
Fax +39 434 555 974

info@atra.it
www.atra.it

RUSSIA

Ostec Enterprise Ltd.
Moldavskaya str. 5/2
121467 Moscow

Phone +7 495 788 44 44
Fax +7 495 788 44 42

info@ostec-smt.ru
www.ostec-smt.ru

CZECH REPUBLIC / SLOVAKIA

AMTECH spol. s r. o.
Palackého třída 153b
621 00 Brno

Phone +420 541 225 215
Fax +420 541 228 285

amtech@amtech.cz
www.amtech.cz

KOREA

ETC CO.,LTD.
Daehyun Techno-World. # 1206
174 Ohjeon-Dong, Uiwang-Si,
Kyunggi-Do, Korea (437-753)

Phone +82 31 427 2530
Fax +82 31 427 1781

wblee@etcco.kr
www.etcco.kr

SPAIN

SINUTECH, S.A.
Sistemas Industriales
Vltregà, 3
08570 Torelló (Barcelona)

Phone +34 938 592 757
Fax +34 938 592 654

dosificacion@sinutech.es
www.sinutech.es

HUNGARY

ELAS Kft.
Diófa u. 130
1162 Budapest

Phone +36 1 222 6439
Fax +36 1 220 9401

elas@elas.hu
www.elas.hu

POLAND

TechSpeed Bendkowski, Mazur Sp.j.
ul. Stawowa 4
PL41-214 Sosnowiec

Phone +48 32 263 19 68
Mobile +48 695 330 363
Fax +48 720 20 94

office@techspeed.pl
www.techspeed.pl