

Turn conveyor L, I, T, X-type



NTM 91 (L) • NTM 181 (I) • NTM 271 (T) • NTM 361 (X)

The turn conveyor is designed to change the flow direction of a PCB assembly line. The PCB is transferred onto the built-in ESD belt conveyor, which turns either clockwise or counter-clockwise.

Standard features

- Conveyor width adjustment using hand crank.
- (NTM 91) Turning 90° clockwise or counter-clockwise
- (NTM 181) Turning 180° to change fixed rail position
- (NTM 271 and 361) various configurations possible
- By-pass mode available.
- Controlled by PLC.
- Unique lateral transfer system to handle small PCB's.
- CE certified.

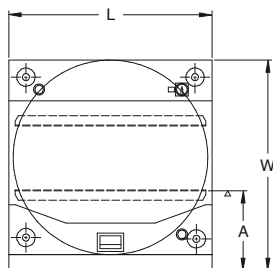
Technical specifications

Transfer height:	950 mm ± 25 mm*
Colour:	RAL 9002*
Flow direction:	Left to right*
Fixed rail:	Front*
Machine interface:	SMEMA*
Conveyor concept:	ESD belt
Belt speed:	14 m/min.
PCB edge support:	3 mm
Components clearance:	Top 30 mm, bottom 30 mm
Power supply:	230 VAC/50 Hz/1 Ph
Power consumption:	200 VA max.
Air supply:	4-6 bar
Air consumption:	1.5 ltr/min max.
Machine cycle time:	± 16 seconds
	* or specify

Options

- Good or bad board separation
- Electrical conveyor width adjustment
- Automatic conveyor width adjustment
- Cantilevered input- or output conveyor (length 500 mm)
- Touchscreen display
- Towerlight display
- Alarm buzzer

Other options available on request



	NTM 91, 181, 271, 361M	NTM 91, 181, 271, 361L	NTM 91, 181, 271, 361XL
Machine dimensions (l x w x h)	795 x 795 x 1100 mm	875 x 875 x 1100 mm	975 x 975 x 1100 mm
Weight	160 kg	170 kg	200 kg
PCB length	80 mm - 457 mm	80 mm - 457 mm	80 mm - 460 mm*
PCB width	50 mm - 250 mm	50 mm - 407 mm	50 mm - 460 mm*
Fixed rail to front dimension (A)	272 mm	234 mm	234 mm

* or specify