

# Solder outfeed conveyor



NTM 430M 2500 • NTM 430L 2500 • NTM 430XL 2500

**This conveyor is used to unload PCB's or pallets from a wave soldering machine at 6-7° angle. Decline section presents PCB/pallet at standard height to downstream machine.**



## Standard features

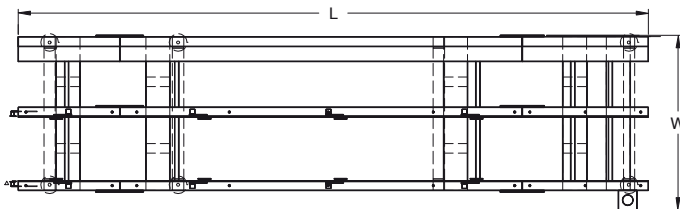
- Conveyor width adjustment using hand crank.
- Free running concept, no flow control.
- Flux protected by using 3 mm pinchain.
- Sliding resistors on decline section.
- CE certified.

## Technical specifications

Transfer height:	Specify upon order
Colour:	RAL 9002*
Flow direction:	Left to right*
Fixed rail:	Front*
Machine interface:	None
Conveyor concept:	Metal pinchain
Chain speed:	Variable 0.5 mm -3 m/min.
PCB edge support:	3 mm
Components clearance:	Top 30 mm, bottom 30 mm
Power supply:	230 VAC/50 Hz/1 Ph
Power consumption	150 VA max.
	* or specify

## Options

- Pinchain using 5 mm pins
  - Cooling fans
  - PLC package; incl. alarm buzzer, SMEMA interface, stopper and sensor
  - Electrical conveyor width adjustment
  - Automatic conveyor width adjustment
- Other options available on request



	NTM 430M 2500	NTM 430L 2500	NTM 430XL 2500
Machine dimensions (l x w x h)	2500 x 535 x 1300 mm	2500 x 690 x 1300 mm	2500 x 740 x 1300 mm
Weight	180 kg	200 kg	220 kg
PCB length	80 mm - 457 mm	80 mm - 457 mm	80 mm - 460 mm*
PCB width	75 mm - 250 mm	75 mm - 407 mm	75 mm - 460 mm*

\* or specify