

Solder infeed conveyor



NTM 420M 1000 • NTM 420L 1000 • NTM 420XL 1200

This conveyor is used to feed PCB's or pallets into wave soldering machine at 6-7° angle.

Standard features

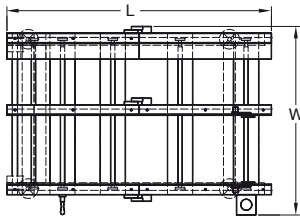
- Conveyor width adjustment using hand crank.
- Two ESD belt segments of 500 mm (XL size = 600 mm).
- Second belt segment at 6-7° adjustable angle.
- Dual speed on second segment for fluent transfer.
- Controlled by PLC.
- CE certified.

Technical specifications

Transfer height:	950 mm ± 25 mm*
Colour:	RAL 9002*
Flow direction:	Left to right*
Fixed rail:	Front*
Machine interface:	SMEMA*
Conveyor concept:	ESD belt
Belt speed:	Fixed in at 14 m/min, variable out 0.5-14 m/min.
PCB edge support:	3 mm
Components clearance:	Top 30 mm, bottom 30 mm
Power supply:	230 VAC/50 Hz/1 Ph
Power consumption:	150 VA max. * or specify

Options

- Electrical conveyor width adjustment
 - Automatic conveyor width adjustment
 - Pinchain (3 mm or 5 mm pins) instead of ESD belt
 - Outfeed delay timer
- Other options available on request



	NTM 420M 1000	NTM 420L 1000	NTM 420XL 1200
Machine dimensions (l x w x h)	1000 x 535 x 1000 mm	1000 x 690 x 1000 mm	1200 x 740 x 1000 mm
Weight	60 kg	70 kg	85 kg
PCB length	80 mm - 457 mm	80 mm - 457 mm	80 mm - 460 mm*
PCB width	75 mm - 250 mm	75 mm - 407 mm	75 mm - 460 mm*

* or specify