

***Non contact, non scattering,  
automated coating.***

**NEW**



## **Twin**

Equipped with dispense system

Consistent, non scattering,  
widely high speed dispensing

**CV-10**



Spot coating by non contact  
high speed jet.

**AeroJet<sup>®</sup>**



## Feature

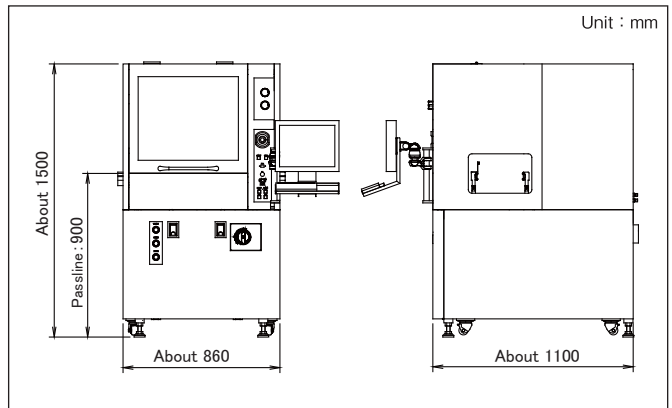
- Masking is unnecessary. Feely control from spot coating to wide range coating without dispersion.
- Excellent dispense repeatability with standard equipped image recognition system.
- Corresponds M size substrates (Max. 250x330mm).
- Corresponds combining inline type and loader/unloader type.

## Specifications

Work size	Wide : 30mm~250mm Length : 50mm~330mm
Height of parts	Max : 50mm
Speed	XY-axis:Max.1,000mm/sec. Z-axis:Max.500mm/sec.
Power supply	200V, 20A
Supply air pressure	500kPa
Maximum transportable weight	5kg
Direction of flow	Left to right
External dimensions	(W)860mm×(D)1,100mm×(H)1,500mm
Weight	350kg
Dispenser that can be used	CV-10 AeroJet
Control method	Computer-controlled
Program input method	MuCAD III
Standard equipment function	Camera for image recognition
	Head rotation mechanism
	Nozzle soaking Pod and dummy-shot Pod
	The downstream direction exhaust system
Option	Corresponding 2 HEADS
	Dispensing width control function

\*1: The work size that can correspond dependson the selected option. Please inquire for details.

## External dimensions

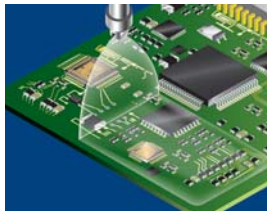


## Dispense system



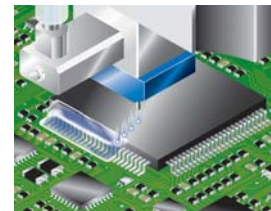
### Spray coating system CV-10

- Non scattering, widely high speed dispensing.
- Constant thin-film dispensing against uneven substrate.



### Non contact coating system AeroJet®

- High speed spot coating by 270shot/sec.
- Ease of maintenance and 4times durability enhanced.



安全に関するご注意 Safety precaution  
正しく安全にお使いいただくため、ご使用前に必ず「取扱説明書」をよくお読み下さい。

※本仕様は、おことわりなく変更する場合があります。

※本カタログは、当社の著作物です。掲載されている写真・図・その他の情報を、無断で複写し、他のカタログ等に掲載し、また電子情報として配信する行為は著作権侵害になります。



世界のディスペンサー

武蔵エンジニアリング株式会社

MUSASHI ENGINEERING, INC.

#### HEAD OFFICE

8-7-4, Shimorenjaku, Mitaka-shi, Tokyo, 181-0013, Japan TEL : (81)422-76-7111 / FAX : (81)422-76-7122

#### BRANCH

TOKYO, OSAKA, NAGOYA, SENDAI, FUKUOKA, SAITAMA, NAGANO, EAST-KANTO, AKITA, KANAZAWA

MUSASHI ENGINEERING HONG KONG LTD. Unit 1706, 17/F., Greenfield Tower, (South)Concordia Plaza, No.1 Science Museum Road, T.S.T.East, Kowloon, H.K. TEL : (852)2620 5799 / FAX : (852)2620 5771

MUSASHI ENGINEERING SHANG HAI LTD. B-7A Room, Fu Qun Business Building, NO.3089 He Chuan Road, Min Hang, Shanghai, China 201103 TEL : (86)21 6446 7881 / FAX : (86)21 6446 7882

SHENZHEN BRANCH Unit 4, 6/F., Building3 Tianan Digital City Chegongmiao Futian Shenzhen China TEL : (86)755 8346 6822 / FAX : (86)755 8346 6866

DALIAN BRANCH Building 72, 4-16-2 Haibinli, Dalian Economic & Technological Development Area, P.R. CHINA 116600 TEL : (86)138 8952 0381

MUSASHI ENGINEERING KOREA., LTD. Rm 906-1, A-dong, Bundang Techno-Park, 150 Yatap-dong, Bundang-gu, Seongnam-si, Gyeonggi-do 463-816, Korea TEL : (82)31-702-3811 / FAX : (82)31-702-3881

TAIWAN BRANCH 8F-2, No. 158, Sec. 2, Gongdao 5th Road, Hsinchu, Taiwan 30070 TEL : (886)3-572-9200 / FAX : (886)3-572-9300

SINGAPORE BRANCH 20 Bendemeer Road, #06-13 CyberHub Singapore 339914 TEL : (65)6258-2422 / FAX : (65)6258-4844

MUSASHI ENGINEERING (THAILAND) CO., LTD. No.12 Soi Bangna-Trad 25, Bangna, Bangkok 10260 Thailand TEL : (66)2-769-5708 / FAX : (66)2-769-5450



武蔵エンジニアリング株式会社は環境マネジメントシステム ISO14001の認証取得企業です。