

E-series Turn conveyor



NTE 091 (L) • NTE 0181 (I) • NTE 0271 (T) • NTE 0361 (X)

The unit is designed to change the flow direction of a PCB assembly line. The PCB is transferred onto the built-in ESD belt conveyor, which turns either clockwise or counter-clockwise.

Standard features

- Conveyor width adjustment using hand crank.
- (NTE 091) Turning 90° clockwise or counter-clockwise
- (NTE 0181) Turning 180° to change fixed rail position
- (NTE 0271 and 0361) various configurations possible.
- By-pass mode available.
- Controlled by PLC.
- Unique lateral transfer system to handle small PCB's.
- CE certified.

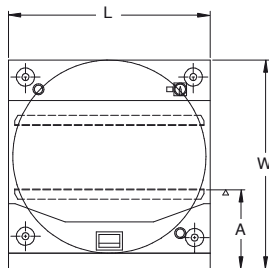
Technical specifications

Transfer height:	950 mm ± 25 mm*
Colour:	RAL 9002*
Flow direction:	Left to right*
Fixed rail:	Front*
Machine interface:	SMEMA*
Conveyor concept:	ESD belt
Belt speed:	14 m/min.
PCB edge support:	3 mm
Components clearance:	Top 30 mm, bottom 30 mm
Power supply:	230 VAC/50 Hz/1 Ph
Power consumption:	200 VA max.
Air supply:	4-6 bar
Air consumption:	1.5 ltr/min max.
Machine cycle time:	± 18 seconds
	* or specify

Options

- Good- or bad board separation
- Cantilevered input- or output conveyor (length 500 mm)
- Towerlight display
- Alarm buzzer

Other options available on request



	NTE 091, 0181, 0271, 0361L
Machine dimensions (l x w x h)	875 x 875 x 1100 mm
Weight	180 kg
PCB length	80 mm - 460 mm
PCB width	50 mm - 460 mm
Fixed rail to front dimension (A)	234 mm