

The unit loads your production line automatically by pushing PCB's out of the magazine onto the conveyor of the downstream machines. Full magazines can be inserted at an ergonomic low level.



Standard features

- Automatic magazine change-over.
- Automatic magazine alignment by upper and lower pneumatic clamping.
- Controlled by PLC.
- Tailor made to the magazine of your choice.
- Regulated pressure on pneumatic pusher.
- Towerlight display for machine status.
- Selectable pitch settings.
- CE certified.

Technical specifications

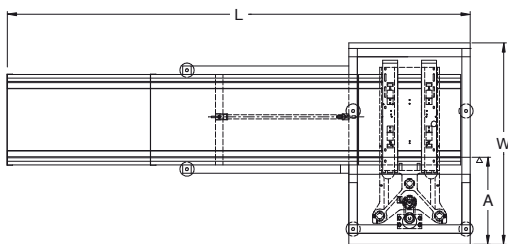
Transfer height:	950 mm ± 25 mm*
Colour:	RAL 9002*
Flow direction:	Left to right*
Fixed rail:	Front*
Machine interface:	SMEMA*
Components clearance:	Top 30 mm, bottom 30 mm (depends on pitch)
Power supply:	230 VAC/50 Hz/1 Ph
Power consumption:	580 VA max.
Air supply:	4-6 bar
Air consumption:	10 ltr/min max.
PCB loading time:	± 7 seconds
Magazine change-over time:	± 40 seconds
Pitch control:	1-4, 10 mm pitch
Maximum total magazine weight:	50 kg each
Total number of magazines:	1 magazine on the lifter platform. 2 empty magazines on the upper magazine conveyor. 3 full magazines on the lower magazine conveyor.

* or specify

Options

- Width adjustable magazine conveyor(s)
- Additional magazine capacity
- Shorter magazine change-over (22 sec)
- Alarm buzzer

Other options available on request



	NTE 0110LL
Machine dimensions (l x w x h)	2480 x 975 x 1700 mm
Weight	300 kg
PCB length	80 mm - 460 mm
PCB width	50 mm - 460 mm
Magazine dimensions (max.)	535 x 530 x 570 mm
Fixed rail to front dimension (A)	385 mm