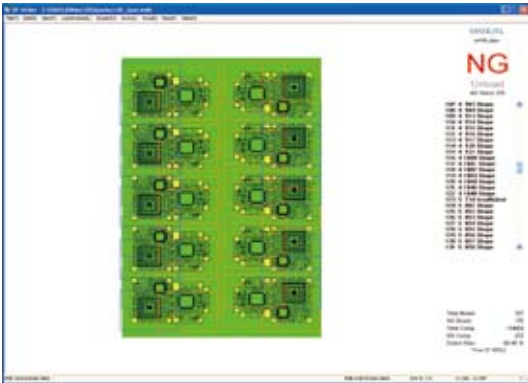


3D In-Line Solder Paste Inspection System

BF-SPider

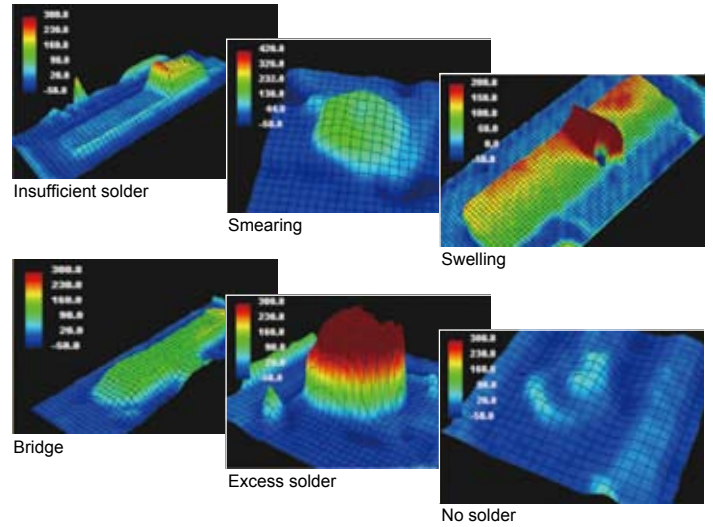
Compatibility with Saki BF-1 AOI Systems

The user-friendly Saki BF-1 operating system allows network compatibility with all Saki BF-1 AOI series.



3D In-Line Solder Paste Inspection System

Advanced analysis capability is achieved by integrating original, state-of-the-art Saki 3D measurement technology. This allows the system to easily rotate, enlarge, and reduce images.



High Speed and Precision Inspection System

The newly developed Phase Measurement Profilometer Technology ensures high inspection repeatability. The height and volume

inspection repeatability is rated at +/- 1% (3σ), with a Gauge Repeatability and Reproducibility (GR&R) of less than 10%.



BF-SPider-L



BF-SPider-M

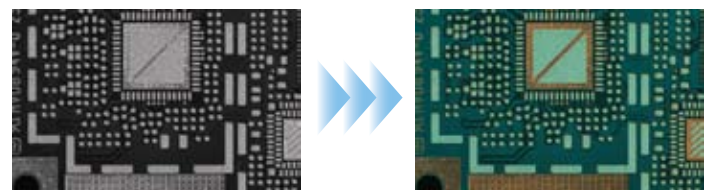


Data Analysis

Process indices such as Process Capability (Cp, Cpk), XY Deviation, and solder deposition information can be shown in real time.

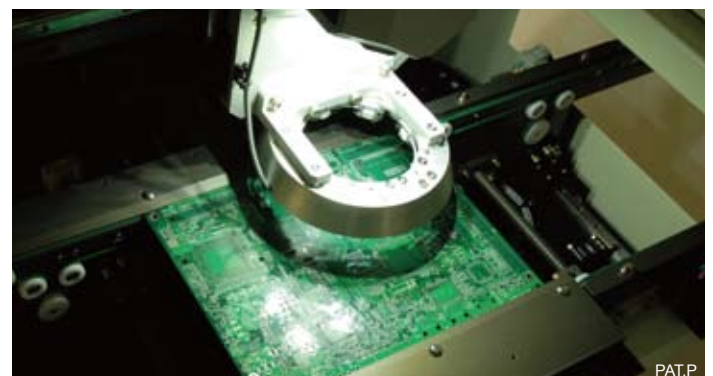
2D and 3D inspection

BF-SPider combines color 2D image and 3D image to obtain high precision paste measurement under varying PCB surface color, silk print, pad color conditions. The zero point is measured for each pad, allowing a wide tolerance against PCB warpage. The BF-SPider's combination 2D/3D methodology allows for accurate measurements of insufficient solder, scratches and solder splash on golden fingers.



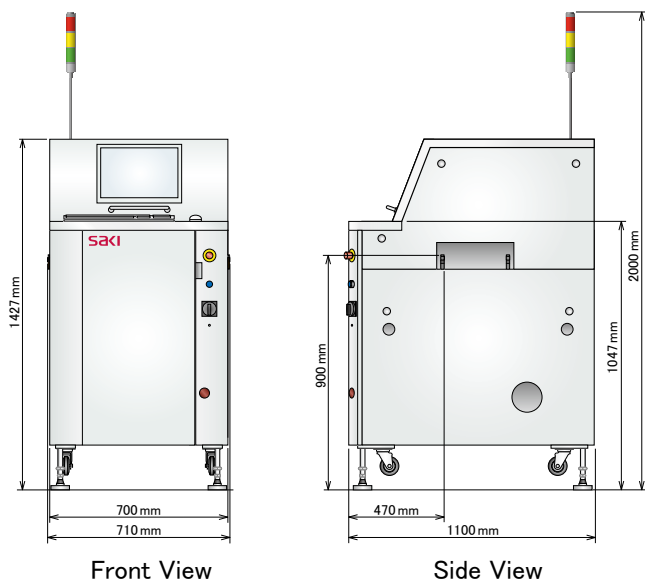
Ordinary black & white image

Composite color image

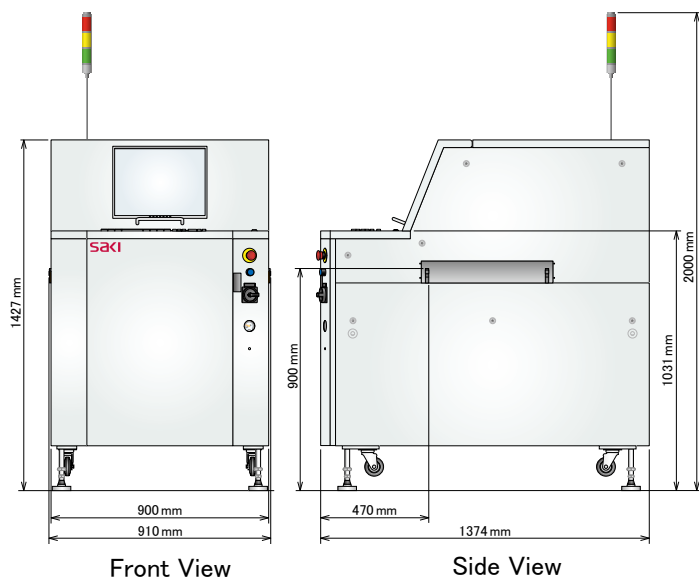


Dimensions

BF-SPider-M



BF-SPider-L



System Specifications

Model	BF-SPider-M	BF-SPider-L
Board Size	50×60 - 250×330mm, 2×2.4 - 10×13 in	50×60 - 460×500mm, 2×2.4 - 18×20 in
Board Thickness	0.4 - 5.0 mm, 16 - 197 mils	
Board Warp	+/-3 mm, 120mils	
PCB Clearance	Top: 25 mm, Bottom: 25 mm	
Inspection Categories	Volume, Height, Area, Shift, Shape, Spread, Bridge	
Image Capturing Time (Image Resolution : 18µm)	60FOV Approx. 18 sec.	183FOV Approx. 55 sec.
Fiducial Mark Inspection Time	Approx. 3 sec.	
PCB L. /Unl. Time	Approx. 3 sec.	Approx. 5 sec.
Horizontal Resolution	12µm (Standard) or 18µm (Option:Possible to choose before dispatch)	
Height Resolution	0.4 µm	
Height Accuracy	+/-2µm	
Paste Height Range	0 - 450 µm	
Height Inspection Repeatability	+/-1% (3σ) (With 3D Calibration Jig only)	
Volume Inspection Repeatability	+/-1% (3σ) (With 3D Calibration Jig only)	
Gauge R&R	Less than 10%	
Detection Method	2D CCD / Phase Shifting	
Lighting	3D: Stroboscopic Lamp, 2D: LED	
Transfer Conveyor Method	Round belt transfer	
Transfer Conveyor Height	900+/-20 mm	
Transfer Conveyor Width Adjustment	Auto	
Operating System	Windows XP English Version	
Electrical Requirement	Single Phase ~200 - 230V +/-10%, 50/60Hz, 800VA	
Air Requirement	0.5MPa, 5L/min (ANR), 73PSI, 0.18CFM	
Usage Environment	15 - 30°C / 15 - 80% RH (Non-condensing)	
Dimensions W x D x H	700 × 1100 × 1427mm	900 × 1374 × 1427mm
Weight	Approx. 600kg	Approx. 800kg

saki Saki Corporation

URL:<http://www.sakicorp.com> E-mail:sakicorp@sakicorp.com

Headquarters

Ogawa Building, 4-14-7, Nakanobu,
Shinagawa-ku, Tokyo, Japan, 142-0053
TEL: +81-3-5788-6280 FAX: +81-3-5788-6295

Saki (Shanghai) CO.,LTD

Room 809, Kerry Everbright City, No. 218 West Tian Mu Road,
Zhabei District, Shanghai 200070, P.R.C.
TEL: +86-21-6282-2266 FAX: +86-21-5230-5002

Saki America, Inc.

200 Prosperity Drive Knoxville, TN 37923
TEL: +1-865-824-1332

Global Network

USA office (TN)

TEL: +1-865-824-1332

Europe office (Augsburg)

TEL: +49-821-90-89-99-0

FAX: +49-821-90-89-99-99

China office (Shanghai)

TEL: +86-21-6282-2266

FAX: +86-21-5230-5002

Korea office

TEL: +82-31-222-6144

FAX: +82-31-222-6744

Taiwan office

TEL: +886-3-312-6868

FAX: +886-3-312-6767

Asia Pacific office (Singapore)

TEL: +65-6496-7711

FAX: +65-6496-7722

Zastoupení pro ČR a Slovensko:

AMTECH spol. s r.o.

Banskobystrická 141
621 00 Brno

www.amtech.cz

amtech@amtech.cz

tel.: +420 541 225 215

